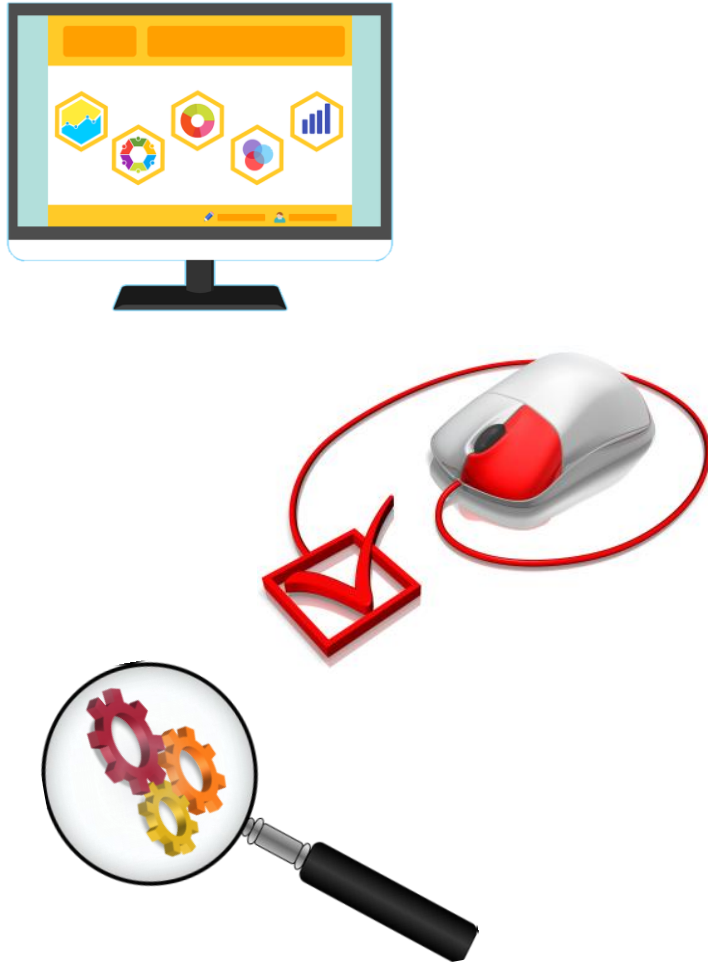


BPFI

Survey about Gifts & Inheritances

July 2024





- A number of questions were placed on the Amárach Research **July 2024** omnibus.
- The questions were pre-agreed with the **Banking & Payments Federation Ireland** and included questions about gifts and inheritances.
- A **total sample of 1,000** adults 18+ was achieved using a combination of quota controls and weighting to ensure the final sample is aligned with the national population in terms of gender, age, region and social grade.
- Survey fieldwork took place from the **10th to 12th July 2024**.

A note on reporting:

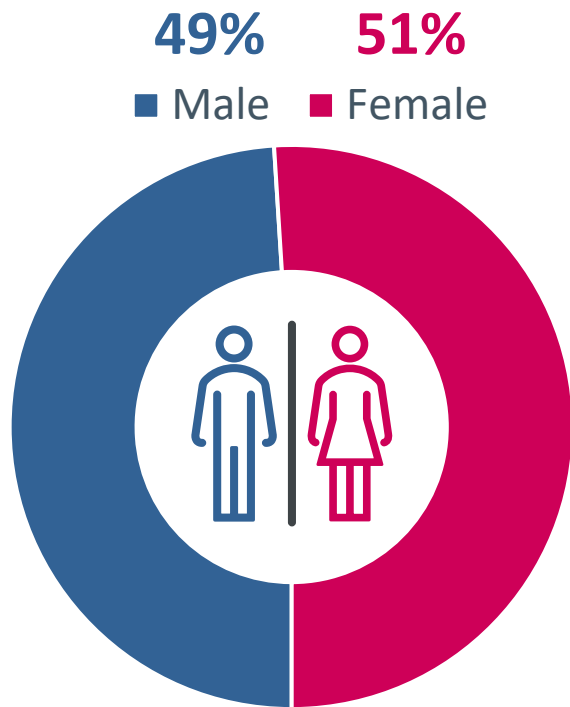
- percentages may not add up to 100% due to rounding.

- the highlighted percentages are notably higher compared to the total sample average.

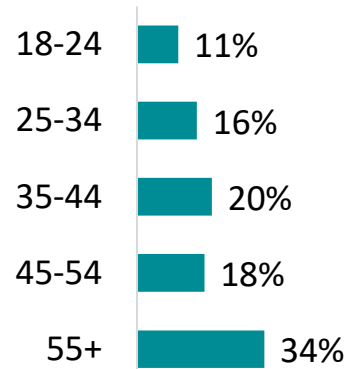


Sample Profile – nationally representative of ROI 18+

Gender



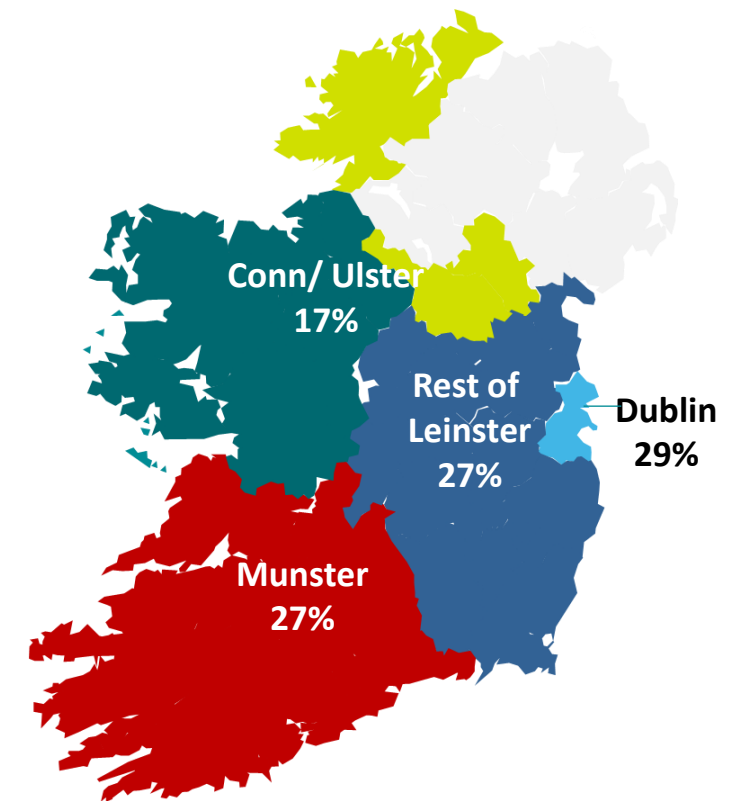
Age



Social class



Region



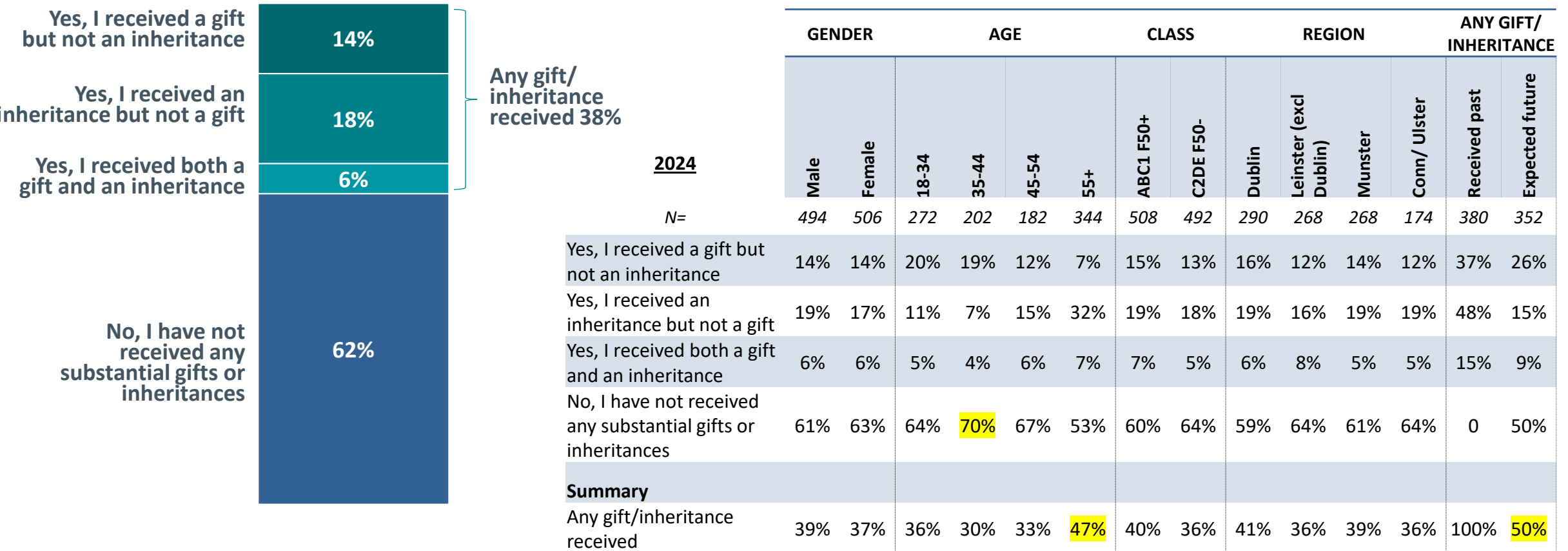
Gifts & Inheritances:





While the majority (62%) of Irish adults have never received any substantial gifts or inheritances, 38% have, with this figure rising to 47% among those aged 55 or older.

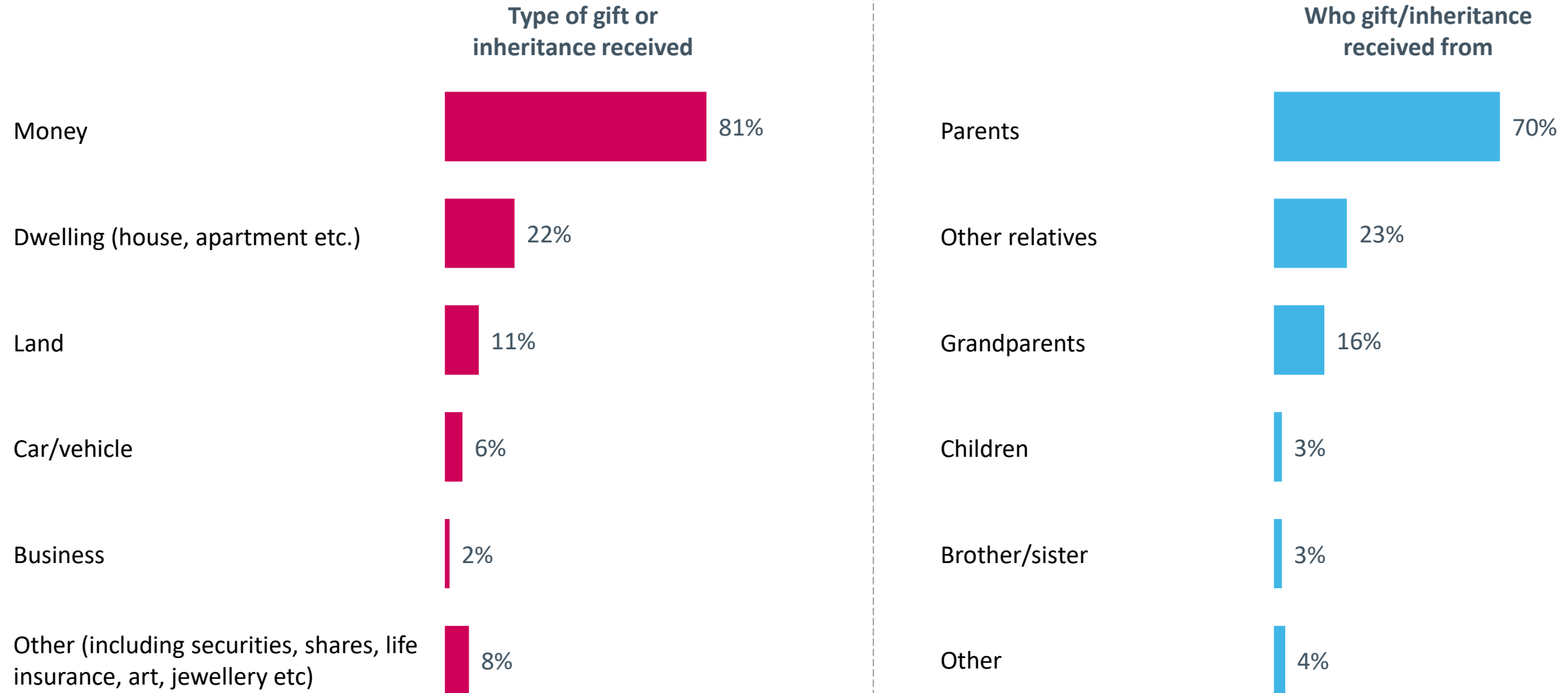
(Base: All respondents – 1,000)





The vast majority of those who received a gift or inheritance received money (81%), while a smaller proportion received a dwelling (22%) or land (11%). The main donors were parents (70%), other relatives (23%) and grandparents (16%).

(Base: All who received a gift/inheritance – 380)

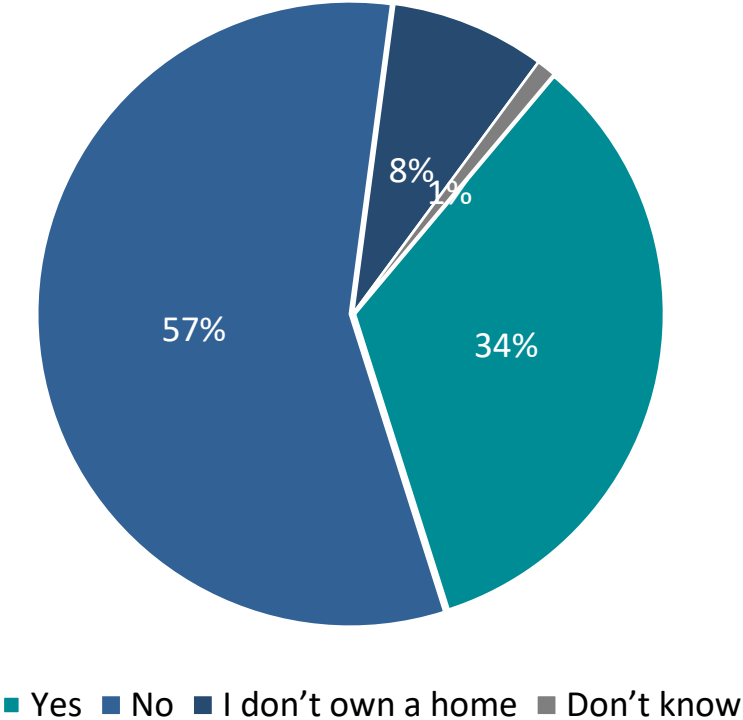


Q9. What type of gift or inheritance did you receive?
Q10. From whom did you receive the gift or inheritance?

Among those who received a gift or inheritance, approximately one third (34%) used it to help them buy or build their own home.



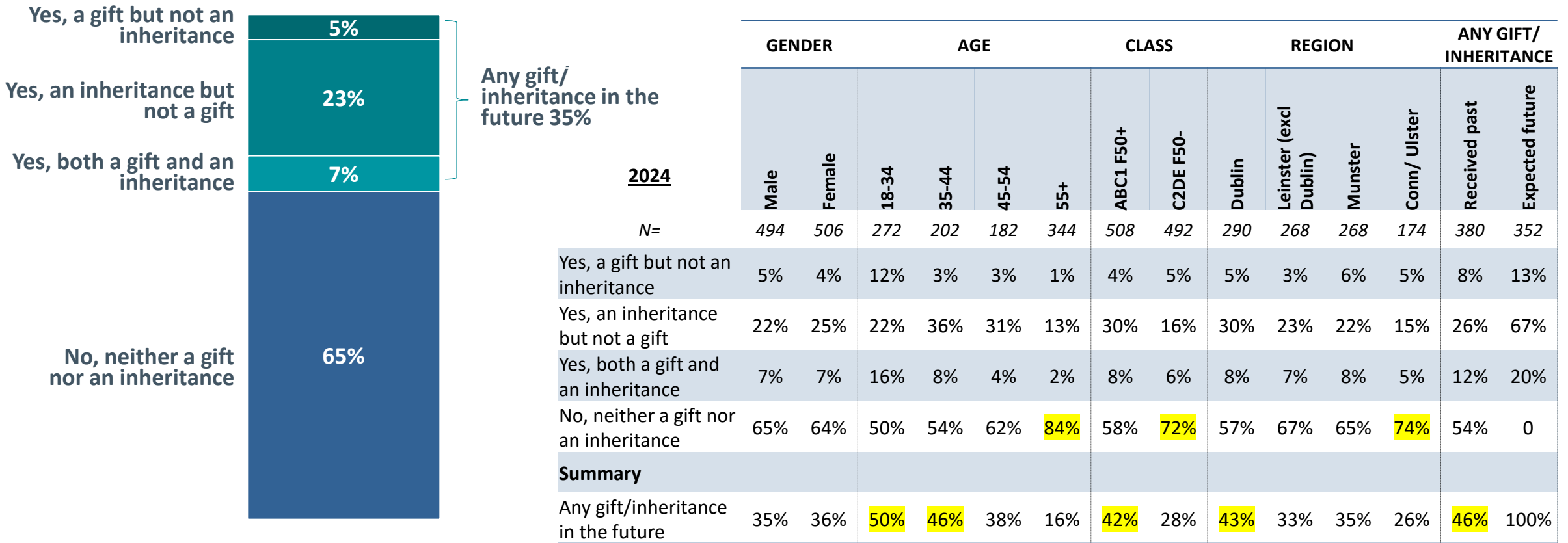
(Base: All who received a gift/inheritance – 380)





Overall, more than one in three (35%) Irish adults expect to receive a substantial gift or inheritance in the future. The expectation is higher among younger cohorts, ABC1s and those who have received a gift or inheritance in the past.

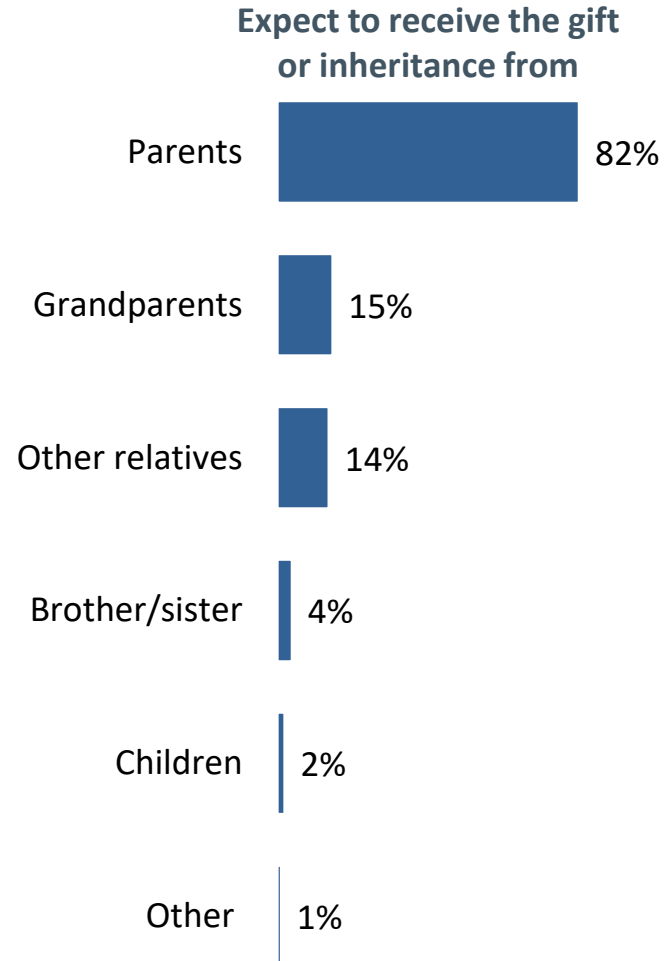
(Base: All respondents – 1,000)





Among those who expect to receive a gift or inheritance, the main donors are expected to be parents (82%), grandparents (15%) and other relatives (14%).

(Base: All who expect to receive a gift or inheritance – 352)



	AGE			
	18-34	35-44	45-54	55+
2024				
<i>N=</i>	135	93	70	54
Parents	73%	92%	92%	74%
Grandparents	36%	3%	0	0
Other relatives	13%	16%	15%	14%
Brother/sister	5%	0	1%	12%
Children	5%	0	0	0
Other	0	2%	0	3%



- A significant portion of the population, particularly older adults, have received substantial gifts or inheritances.
- Money is the most common form of gift or inheritance, with a smaller percentage receiving property or land, highlighting the financial nature of these transfers.
- A notable proportion of recipients used their gifts or inheritances for housing purposes, suggesting that these transfers play an important role in supporting home ownership.
- More than one-third of Irish adults expect to receive a substantial gift or inheritance, with higher expectations among younger individuals, those in higher social classes, and past recipients.
- Parents are the primary expected donors for future gifts or inheritances, emphasizing the continuing role of intergenerational support within families.



 info@amarach.com

 01 410 5200

 www.amarach.com

 [amarach.research](https://www.linkedin.com/company/amarach-research)

 [@AmarachResearch](https://twitter.com/AmarachResearch)

amárach 